

Assembly instructions

HOOD USER GUIDE
ENGLISH



svan

CAMPANA GRUPO FILTRANTE 60CM BLANCA_SVCF6080

Read this manual prior to performing any task!

SVAN TRADING SL CIUDAD DE CARTAGENA 20 (FUENTE DEL
JARRO) PATERNA 46988 VALENCIA Spain

Telephone: +34 960 600 034

1, en_US

This device is designed exclusively for domestic use.

Table of contents

1	Technical Drawing.....	4
2	WARNING AND SAFETY PRECAUTIONS.....	5
	2.1 LETHAL RISK, DANGER OF POISONING.....	7
3	USAGE WITH AND WITHOUT CARBON FILTER.....	11
4	REPLACEMENT OF CARBON FILTER.....	12
5	CLEANING AND PREVENTIVE MAINTENANCE.....	13
	5.1 Clean metal fat filter.....	13
	5.2 Washing in Dishwasher.....	15
	5.3 Hand Wash.....	15
6	APPLIANCE POSITION.....	16
7	CLEANING AND PREVENTIVE MAINTENANCE.....	17
	7.1 Installation and Unpacking of the Appliance.....	17
	7.2 Recommendations for Energy Saving.....	17
8	CONTENT OF PACKAGE.....	18
9	OVERVIEW OF hood.....	19
10	ASSEMBLY OF PRODUCT.....	20
11	USE OF PRODUCT.....	25
	11.1 REMOTE CONTROL.....	26
12	REPLACING THE LAMPS.....	27
13	AUTHORIZED SERVICE.....	28
14	TECHNICAL TABLE.....	30

1 Technical Drawing

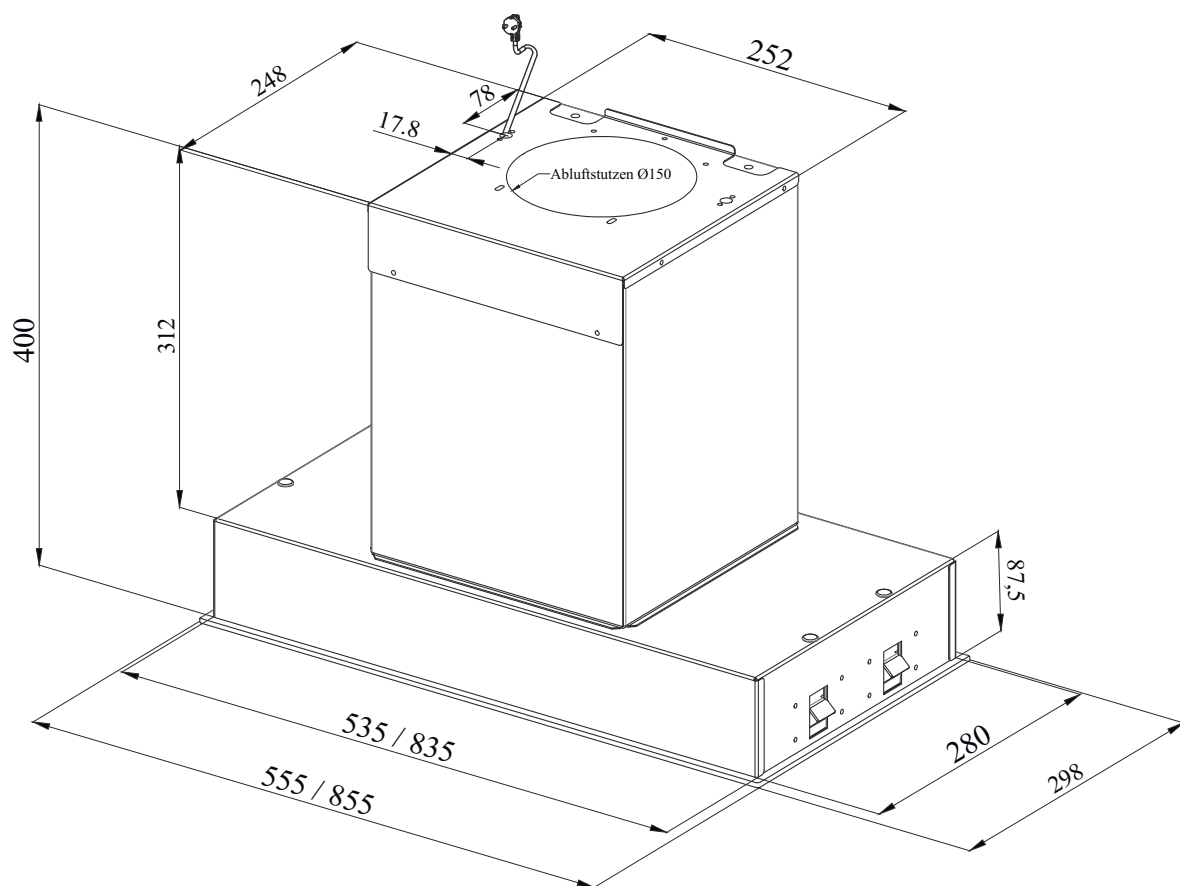


Fig. 1

2 WARNING AND SAFETY PRECAUTIONS

WARNING AND SAFETY PRECAUTIONS

- This appliance can be used by children of 8 years and older, people with physical, sensory or mental capability deficiency or people with lack of experience or knowledge; as long as they are provided supervision or instructions for the safe use of the appliance and they comprehend the dangers.
- Children should not tamper with the appliance. Cleaning and user maintenance operations must not be performed by children unless supervised.
- This product is designed for home use.
- Usage voltage of your product is 220-240 Volt~50-60 Hz.
- Power cord of your product is fitted with a grounded plug. This cord must be plugged into a grounded outlet.
- The whole electrical wiring must be installed by a qualified electrician.
- Installation by unauthorized persons could lead to poor operation performance, damage to the product, and accidents.
- Feeder cable of the appliance mustn't be exposed to jamming or crashing during assembly. Feeder cable mustn't be placed near the cooker. In such cases, it might melt down and lead to fire.
- Do not plug in the appliance before the installation.
- Make sure that the installation place allows the user to easily unplug the power cable in case of any danger.
- Do not touch your product's lamps when they work for a long time. The lamps may burn your hand as they will be hot.
- Kitchen hoods are manufactured for household use in normal home cooking. There is a risk of malfunction in other types of use, and the product guarantee will be void.
- Comply with the rules and instructions regarding discharge of outgoing air, stipulated by the relevant authorities. (This warning does not apply to uses without flue.)
- Flammable foods must not be cooked under the appliance.
- Start your product after you place pot, pan etc. on the stoves. Otherwise, high temperature may cause same parts of your products to deform.
- Turn off the cooker's burner before taking the saucepan, pan, etc. off the cooker.
- Do not leave boiling oil on the stove. Pots that contain boiling oil may catch fire by itself.
- Since oils could catch fire when you cook fried foods in particular, be careful about your curtains and tablecloths.
- Ensure timely replacement of the filters. Filters not replaced in a timely manner pose risk of fire due to accumulated grease deposits on them.
- Do not use non-fire-resistant filtering materials instead of the filter.
- Do not operate your product without filter, and do not remove the filters when the product is in operation.
- In case of any fire, de-energize the hood and any other cooking devices. (Plug off the appliance or turn off the main switch.)

- If your product's periodic cleaning is not made in a timely manner, it could pose risk of fire.
- De-energize the appliance before any maintenance operations. (Plug off the appliance or turn off the main switch.)
- When electric cooker hood and devices fed with energies other than electricity operate simultaneously, the negative pressure in the room must not exceed 4 Pa (4 X 10 bar).
- Gas or fuel oil burning appliances, such as room heaters, which share the same environment with your product, must be fully insulated from the exhaust of this product or they must be hermetical.
- When you make a flue connection for your product, use pipes with a diameter of 150mm or 120 mm. The length of the duct connection as well as the number of elbows must be as minimum as possible.
- Children must not play with the appliance.
- For your safety, use "MAX 6 A" fuse in the hood system.
- Since the packing materials could be dangerous, keep them away from children.
- If the feeder cable is damaged, it must be replaced by its manufacturer or its authorized technical service or any other personnel qualified at the same level, in order to avoid any dangerous situation.
- In case of any deflagration, de-energize the cooker hood and cooking appliances, and cover the flame. Never use water to extinguish the fire.
- When cooking appliances are in operation, their accessible parts could be hot.
- This appliance is not intended to be used by people with physical, sensory and mental disabilities (including children) or those who have not adequate experience and knowledge regarding its use, unless they are under the supervision of a person responsible for the safety of the appliance.
- After the installation of the hood, the minimum distance must be 65 cm between the product and any electric cooker; and 75 cm between it and any gas ranges or cookers burning other fuels.
- Output of the hood must not be connected to air ducts, where there exist another smokes.
- You must be careful when using the appliance spontaneously with other appliances (e.g. gas, diesel fuels, coal, wood, etc. burning heaters, shower heaters), which use the same air in the same environment. Attention must be paid when using them simultaneously. It is because the hood could adversely affect the combustion, by discharging the ambient air.
- This warning does not apply to uses without flue.
- When electric cooker hood is used simultaneously with devices that use gas or other fuels, there must be sufficient ventilation in the room (might not apply to devices that discharges the air back into the room).

2.1 LETHAL RISK, DANGER OF POISONING



DANGER!

Warning - Choking Hazard

The packaging materials are dangerous for children. Never allow children to play with packaging materials.



DANGER!

Warning - Death Hazard

There are life-threatening danger and poisoning danger due to reabsorbed combustion gases. During the air discharge outlet use, unless sufficient air supply is provided, do not use the appliance simultaneously with devices that discharge toxic gases through flue such as ventilated, gas, oil, wood or coal burning heaters, shower heaters, water heaters, etc. Fig. 2

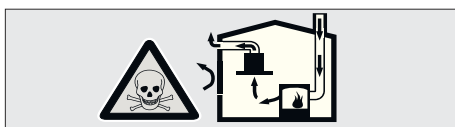


Fig. 2: Poisoning Danger

Ventilated goods (e.g. gas, oil, wood or coal burning heaters, shower heaters, water heaters) take combustion air from the installation location, and discharge the waste gas through a waste gas system (e.g. flue). When the cooker hood is active, it absorbs air from the kitchen and neighbouring rooms. If adequate air entry is not provided, vacuum emerges. In such a case, the toxic gases are absorbed from the flue and waste gas channel, and are taken into to door again. Fig. 2

- Therefore, adequate fresh air ingress must always be ensured. Fig. 3

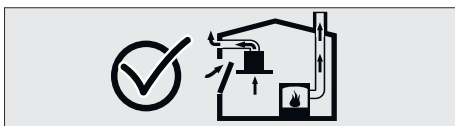


Fig. 3



WARNING!

Fire danger!

- The oil residue in the oil filter may catch fire. **Clean the oil filter at least once every 3 months.** Never operate the device without the oil filter.
- The oil residue in the oil filter may catch fire. Never work with open flame (ex. flambe) near the device. The apparatus is allowed to be installed near a solid fuel (e.g. wood or coal) heater only if it has a non-removable cover. No sparks should be scattered.
- Hot oils and fats catch fire easily. Hot oils and fats should never be left unattended. Never try to put out the fire with water. Turn off the cooker. Kill the flames carefully using a cover, fire blanket or a similar material.
- Gas operated cookers that do not have a cooking pot on create high heat during operation. A ventilation device placed over the cookers can be damaged or burned for this reason. Operate gas cookers only when there is a cooking pot on them.
- Operating multiple gas cookers simultaneously creates high heat. A ventilation device placed over the cookers can be damaged or burned for this reason. Never operate two gas cookers longer than 15 minutes on high flame setting. A large burner over 5kW (Wok) has the power of two gas burners.



WARNING!

Electrocution hazard!

- A malfunctioning device may cause electric shock. Never turn on a malfunctioning device. Pull the power plug and switch off the circuit breaker. Call customer service.
- Unsuitable repairs pose hazards. Repairs and replacement of damaged power cords must be performed only by a customer services technician trained by us. If the device is malfunctioning pull the power plug and switch off the circuit breaker. Call customer service.
- Water leaking into the device may cause electric shock. High pressure or steam cleaners must not be used.


DANGER!
Danger of physical injury!

- During the installation, there is a danger of physical injury due to the sharp edges. Use protective gloves throughout the installation process of the appliance.
- Due to risk of dropping the appliance, assembly of all safety bolts and covers must be performed as specified in the user manual.
- Objects placed on the appliance may fall over. Do not place any objects on the device.
- LED lights are very bright and may damage eyes (Risk group 1). You must not look directly at running LED lights for longer than 100 seconds.


WARNING!
Risk of burn, risk of electric shock!

- Allow the appliance to cool before cleaning or maintenance process. Switch off the fuse or pull out the mains plug from the socket.
- There is risk of damage due to ingress of moisture in the electronics. Do not clean the control components with a wet cloth.
- The surface could be damaged due to a wrong cleaning process. Clean stainless steel surfaces only in their brushing direction. Do not use a stainless steel cleaner for the control elements.
- The surface could be damaged due to aggressive and abrasive cleaning agents. Never use aggressive and abrasive cleaning agents.


WARNING!
Dangers of fire and physical injury!

In case of repairing that is not performed according to the rules or as required, turn off the fuse or unplug the feeder cable of your appliance. Repairing must be performed only by the authorized technical service or authorized experts.


NOTICE!

If the appliance is faulty or damages, turn off the fuse or unplug the feeder cable of your appliance and call the authorized service.



NOTICE!

If the feeder cable is damaged, it must be replaced by its manufacturer or its authorized technical service or any other personnel qualified at the same level, in order to avoid any dangerous situation.



NOTICE!

When the bulbs of the device malfunction, switch off the circuit breaker and unplug the device's power plug from the socket. Replace the defective bulbs immediately (leave bulbs to cool down first), in order to protect the remaining bulbs against overloading.



CAUTION!

Accessible components might be heated when used with cooking devices.



DANGER!

Air outlet pipe of this appliance mustn't be connected in the flue used to discharge the fume generated by devices that use gas or other fuels.

Damage reasons



CAUTION!

Damage hazard due to corrosion. Always run the appliance to prevent condensate formation while cooking. Condensates may cause corrosion damage. Replace the malfunctioning lamp right away to prevent overloading of other lamps. Moisture intrusion in electronic parts poses a risk of damage. Never clean the control elements with a wet cloth. The surface could be damaged due to a wrong cleaning process. Clean stainless steel surfaces only in their brushing direction. Do not use a stainless steel cleaner for the control elements. The surface could be damaged due to aggressive and abrasive cleaning agents. Never use aggressive and abrasive cleaning agents. There is a risk of damage due to condensate liquid backflow. Install the air exit canal with a small downward inclination (1° inclination) from the appliance.

3 USAGE WITH AND WITHOUT CARBON FILTER



You can use this appliance in exhaust air mode and ventilated air mode.

Exhaust air mode

The absorbed air is cleaned by the grease filters, and is discharged through a piping system. Fig. 4

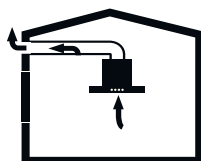


Fig. 4: Air Outlet without Carbon Filter



NOTICE!

Exhaust air must not be transferred to an active smoke or waste gas flue; or a flue used for ventilation of the places, where heat sources are installed.

- If you want to transfer exhaust air to an inactive smoke or waste gas flue, you need to obtain permission from an authorized chimney sweep.
- If exhaust air is discharged through the external wall, a telescopic wall safe must be used.

Ventilated air mode



Absorbed air is cleaned by the grease filters and an active carbon filter, and then it is transferred back to the kitchen. Fig. 5

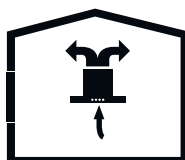


Fig. 5: Air Circulation with Carbon Filter



You need to install an active carbon filter, in order to catch the substances, which cause stink in the circulating air. Consult your authorized dealer to know the different opportunities available for enabling the appliance to function in circulating air mode. You can buy the accessories required for this process from the relevant outlets, authorized technical service or online sales center.

4 REPLACEMENT OF CARBON FILTER

Placing the active carbon filter

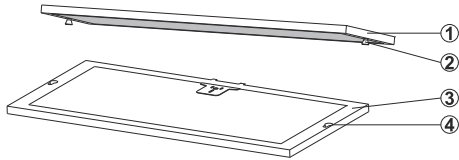


Fig. 6: Placing the active carbon filter

- 1 Active carbon filter
- 2 Fixing pin
- 3 Metal oil filter
- 4 Fixing holes for active carbon filter

1. ➤ Removing the metal oil filters (Fig. 6).
2. ➤ Active carbon filter is placed on the rear side of the metal oil filter. Push it to the side to remove it. (Fig. 6).
3. ➤ Wash the active carbon filter in the dishwasher.



*Active carbon filter may be washed 3 times.
Then the active carbon filter must be
replaced by a new one.*

Washing in a dishwasher

4. ➤ Place the active carbon filter in the dishwasher loosely and steeply and without any other dishes.

5. ➤ Start a program with a maximum temperature of 55° C.

6. ➤ Let the active carbon filter to dry in open air for 24 hours or 40 minutes at 80° C.

After cleaning

Placing the active carbon filter

7. ➤ Place the washed or new active carbon filter on the metal oil filter.

5 CLEANING AND PREVENTIVE MAINTENANCE


CAUTION!

Cleaning and user maintenance of the appliance shall not be performed by unattended children.

- The surface could be damaged due to aggressive and abrasive cleaning agents. Never use aggressive and abrasive cleaning agents. Supply your cleaning and protective substances that are appropriate for your appliance from the authorized technical service. Surface of appliance and control units are sensitive to scratching.
- Clean the surfaces with a soft and damp cloth, dish-washing liquid or mild glass cleaning agent. Soften the dry, sticky dirt with a damp cloth. Do not scrape!
- It is not appropriate to use dry cloths, sponges that may scratch, materials that require rubbing, and other aggressive cleaning agents containing sand, soda, acid or chlorine.
- Clean the stainless steel surfaces in their brushing direction only.
- Do not use stainless steel cleaning agents and wet clothes for control units. Cleaning of metal grease filters Used metal grease filters retain the greasy particles in the moisture and vapour generated in the kitchen. Clean the metal grease filters about every three months, under normal use conditions (1 to 2 hours a day).
- Do not use excessively effective, acidic or alkaline cleaning agents.
- For cleaning the metal grease filters, clean the holder parts of the metal grease filters in the appliance, with a damp cloth as well.
- You can clean the metal grease filters in the dishwasher or by hand.
- Do not apply spray cleaning supplies directly to the product.
- Do not keep flammable and/or heavy decorative items on the product.

5.1 Clean metal fat filter

If the product has carbon filter, remove the carbon filter on the product prior to cleaning the aluminium filter. (Fig. 7).



WARNING!

Risk of due to oilsediments in metal oil filter!

Risk of due to oilsediments in metal oil filter.

- Clean the metal oil filter at least every 2 weeks or when the oil filter cleaning warning is displayed.
- Never operate the hood without a metal oil filter.

The metal oil filter of the appliance keeps solid components (e.g. oil or dust) in the kitchen vapour and greatly prevents contamination of the hood.

Removing the metal oil filters

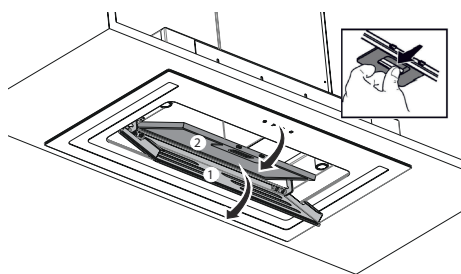


Fig. 7: Removing the metal oil filters

Hand-cleaning

Washing n a dishwasher

After cleaning

1. ➤ Open the side aspirator (Fig. 7/1).

2. ➤



NOTICE!

Material damage due to falling of the metal oil filter!

3. ➤ Open the lock of the metal oil filter (Fig. 7/2) and ensure that it will not fall.

4. ➤ Tilt the metal oil filter forward and lift it out (Fig. 7/2).

5. ➤ Clean the metal oil filter with hand or in the dishwasher.

6. ➤



NOTICE!

Material damage due to wrong detergent!

Soften the metal oil filter in hot water and clean it with a soft brush.

7. ➤ Rinse the metal oil filter in hot water.

8. ➤ Place the metal oil filter in the dishwasher loosely and steeply and without any other dishes.

9. ➤ Start a program with a maximum temperature of 55° C.



Colour changes may occur due to cleaning in the dishwasher. They do not adversely affect the function of the metal oil filter.

10. ➤ Allow the metal oil filter to dry on an absorbent coaster.



If the activated carbon filter is removed, rub it again on the metal oil filter.

Placing the metal oil filters

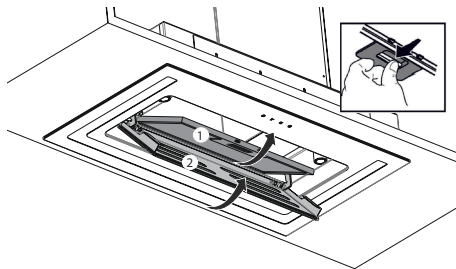


Fig. 8: Placing the metal oil filters

11. ➤ Place the metal oil filter in the product and open the filter lock (Fig. 8/1)
12. ➤ Install the metal oil filter (Fig. 8/1)
13. ➤ Close the side aspirator (Fig. 8/2).



You may have more than one metal oil filter installed in your appliance. Clean other metal oil filters according to this instruction.

5.2 Washing in Dishwasher

In case of washing in dishwasher, a slight change might occur in colour. This has no effect on the function of the metal grease filter.

- Do not clean too dirty metal grease filters together with utensils in the dishwasher.
- Place the metal grease filters loosely and freely in the dishwasher. Metal grease filters must be placed in the dishwasher without jamming.

5.3 Hand Wash



For stubborn dirt, you can use a special grease solvent. You can buy such an agent from the authorized sales centre.

- *Soften the metal grease filters in a hot water with dish-washing liquid.*
- *Use a brush for cleaning and wait for the liquid in metal grease filters to flow off completely.*
- *Rinse the filters thoroughly after cleaning.*

6 APPLIANCE POSITION

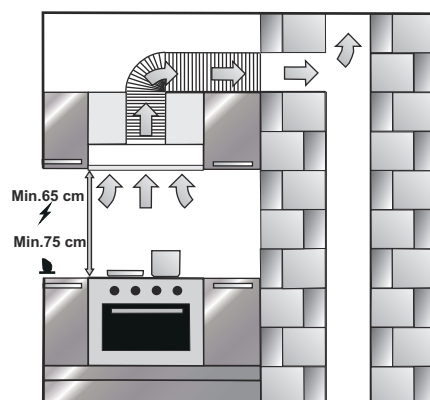


Fig. 9: MIN-MAX INSTALLATION DIMENSIONS

After completing the installation of hood, the minimum distance must be 65 cm between the product and any electric cooker; and 75 cm between it and any gas ranges or cookers burning other fuels (Fig. 9).

7 CLEANING AND PREVENTIVE MAINTENANCE

7.1 Installation and Unpacking of the Appliance

- Check that your appliance is not deformed.
- Report the transport issues immediately to transport operator.
- Any faults encountered shall be reported to the dealer, too.
- Do not allow children to play the with packaging materials!

7.2 Recommendations for Energy Saving

- Replace the carbon filters on a regular basis.
- Regularly clean your aluminium filters. Since dirty filters would block the air passage, you might have to use the appliance at a higher speed.
- Use your product according to its normal speeds.
- Use at higher speed would cause an increase in the energy consumption.

8 CONTENT OF PACKAGE

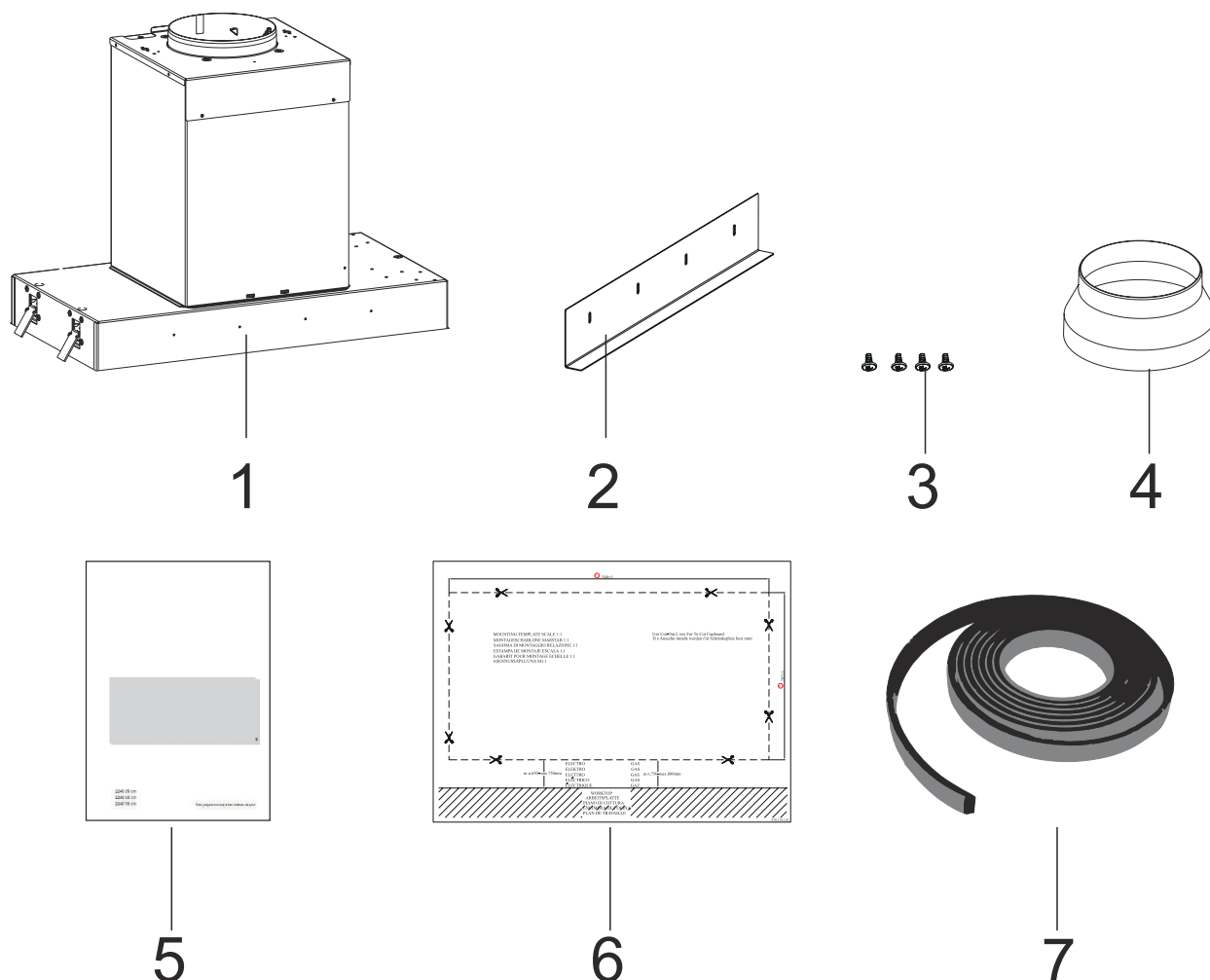


Fig. 10

- 1- Product
- 2- Space cover plate
- 3- Two 3.5x9.5 Screws
- 4- Ø150/125mm Plastic Flue Adapter

- 5- User Manual
- 6- Installation Template
- 7- INSULATION SPONGE

9 OVERVIEW OF hood

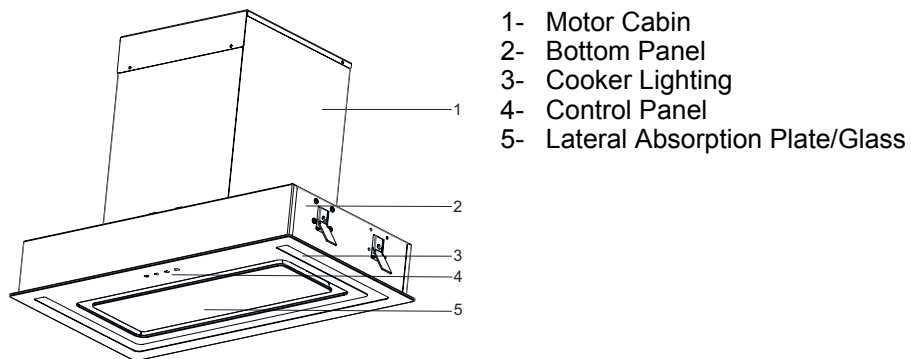


Fig. 11

10 ASSEMBLY OF PRODUCT

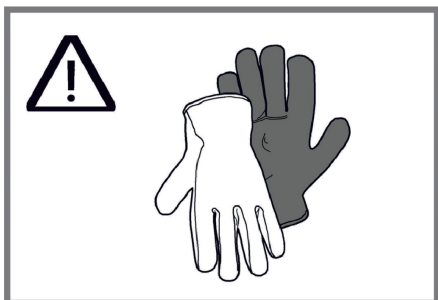


Fig. 12

- Parts inside the appliance may have sharp edges. Use protective gloves (Fig. 12).



CAUTION!

- The furniture that the appliance will be mounted on should be resistant to 90°C temperature.
- The durability of the furniture that will be mounted on should also be ensured after the cutting operations have been completed.
- Particularly in thin plates the carrying capacity and durability should be provided with suitable support parts. Consider the weight of the appliance by including additional loads. The reinforcing material used should be heat and moisture resistant. The weight of the appliance is specified in the label on the package.
- Clean the sawdust after cutting. Cover the cut surfaces so that they are heat resistant and waterproof.
- The cross-sectional surface angle to the working plate should be 90°.

Hood measurements and safety distances

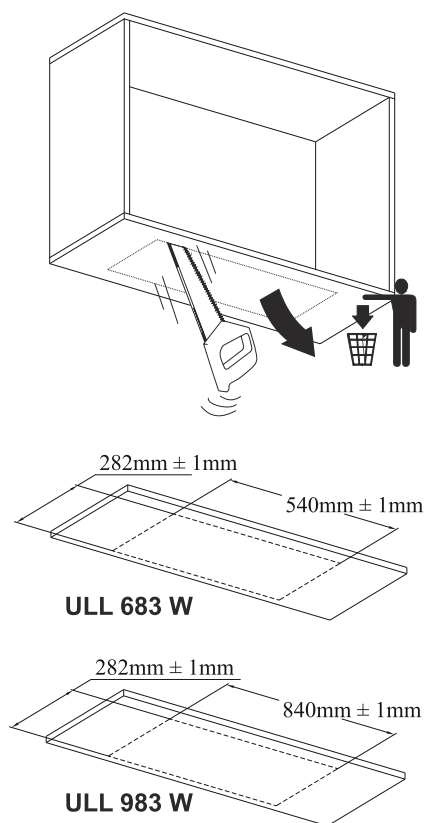


Fig. 13

1. ➔ Cut the surface of the hood to be mounted at the specified dimensions. Observe the cutting measurements of the surface where the cooker hood will be mounted on (Fig. 13).



(\pm 1mm) This indicates that the measurement is 1 mm more or 1 mm less of the specified measurement. Observe these for the mounting surface to be cut.

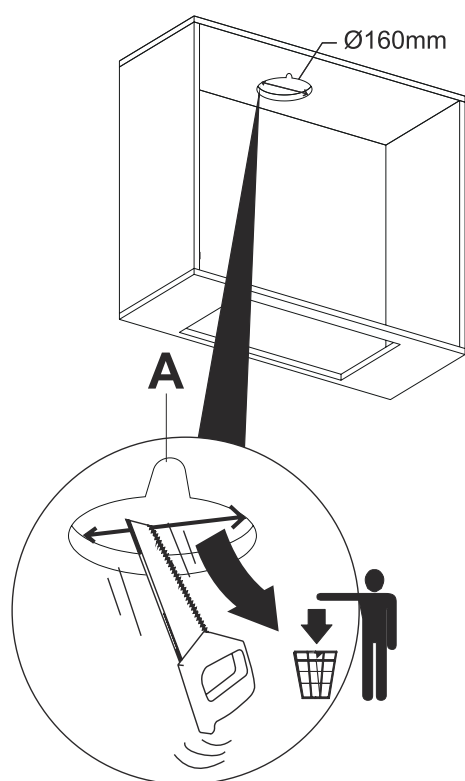


Fig. 14

2. → Cut the top cover of the cabinet to the specified size for the air outlet chimney of the hood(Fig. 14) If the power cord should pass in close proximity to the air discharge flue, create a cross section for it.

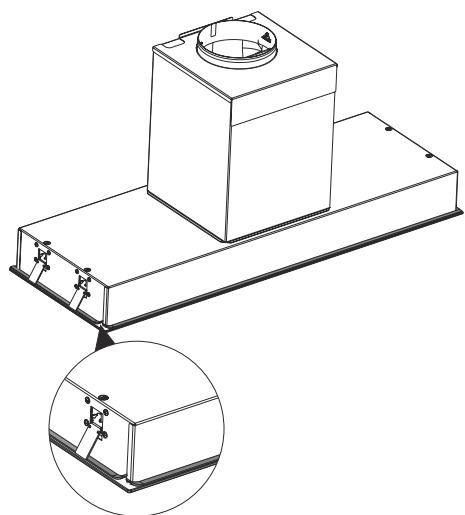


Fig. 15

3. → Attach the insulation foam supplied with mounting accessories to all edges of the product.(Fig. 15)

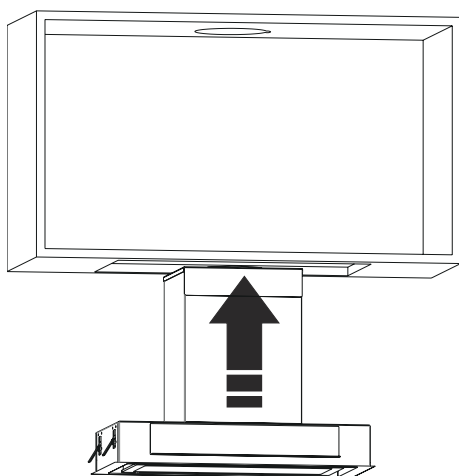


Fig. 16

4. ➔ Place the hood in the direction of the arrow in the area you prepared earlier.(Fig. 16).

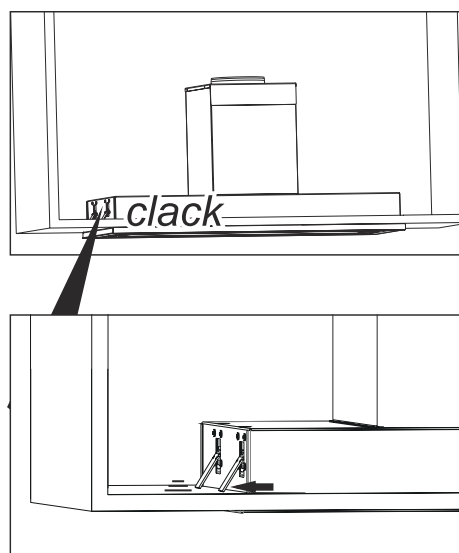


Fig. 17

5. ➔ Make sure that the hanger mechanism on the right and left short side of the hood locks the product(Fig. 17).

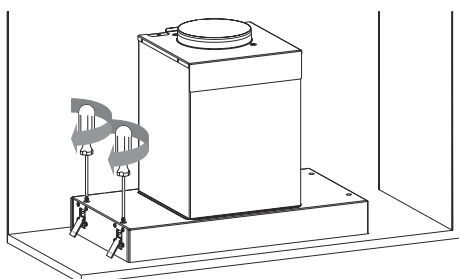
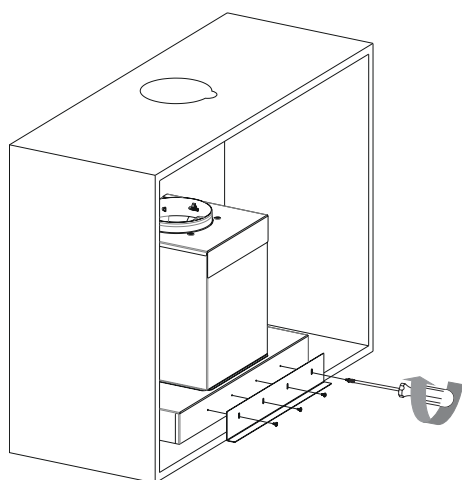


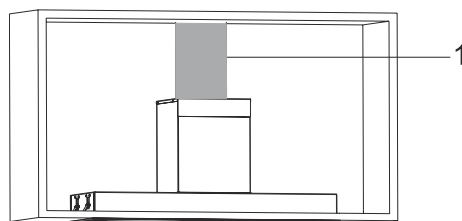
Fig. 18

6. ➔ With the aid of a screwdriver, lock the locking mechanism with turning in the direction of the arrow(Fig. 18).



7. ➤ Mount the spacer plate with 4 3.5x9.5 screws (Fig. 19).

Fig. 19



8. ➤ Make the air outlet pipe connection(Fig. 20)

Fig. 20

<1 Air Outlet Duct

11 USE OF PRODUCT



Fig. 21: Touch Button



When this button is pressed, product will operate at speed level 1.



When this button is pressed, product will operate at speed level 2.



When this button is pressed, product will operate at speed level 3.



Press this button to turn on or off the lamp.

To activate timer function, press and hold any of buttons , and for 3 seconds. When the timer function is activated the relevant button symbol will flash for 15 mins. Then, 15 minute timer function will be activated and the product will turn off automatically after 15 minutes.



After the activation of timer function, pressing any button will deactivate the timer function.



All active functions operated prior to activation of timer function will be deactivated after 15 minutes.

All active functions operated after activation of timer function will be reactivated after 15 minutes.

BOOST

When the product is switched to maximum speed while it is operated, symbol will be displayed on the screen. Flashing of (third speed) on the control panel indicates that boost (boost ventilation) mode is active on the model. Product will operate max. for 7 minutes in this mode and 3rd speed symbol will flash on the screen during this period. After 7 minutes, product will automatically switch down one speed level and will resume operation in the lower speed level.



3. Speed level is the Boost mode, which does not have the timer function.

11.1 REMOTE CONTROL

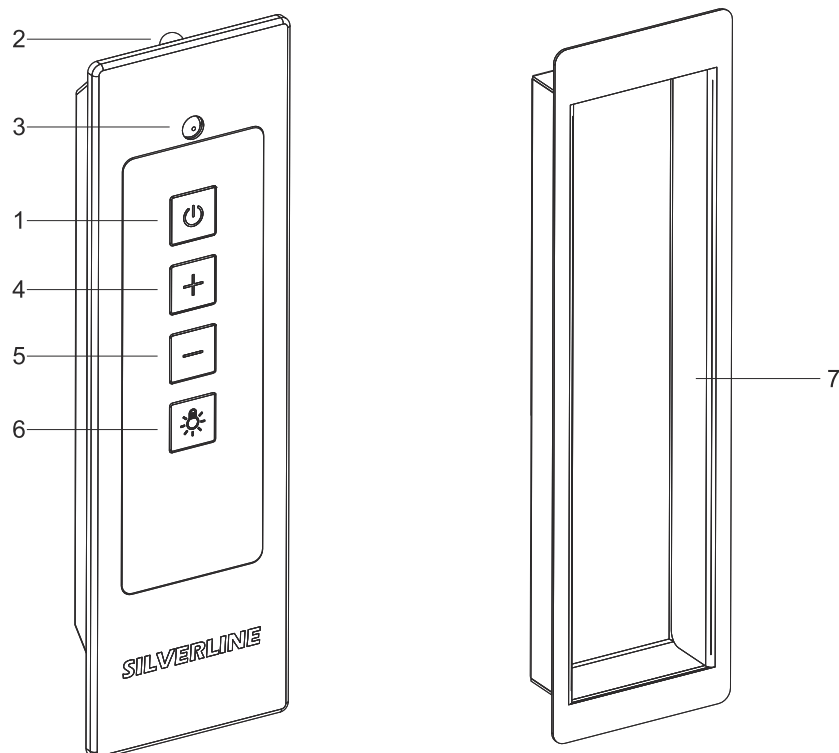






Fig. 22: Remote controller

- 1- holding the product on-off
- 2, 3- Infrared eyes
- 4- Increasing the power level of the fan
- 5- Decreasing the power level of the fan
- 6- Switching the lighting on/off
- 7- Mounting kit for attaching the remote controller to the workbench

1		Press this button to turn on or off the lamp.
4		Press this button to turn on or off the lamp.
5		Press this button to turn on or off the lamp. Press key no. more than 3 seconds to activate timer function.
6		Press this button to turn on or off the lamp.

12 REPLACING THE LAMPS

**NOTICE!**

Contact the dealer or customer service when the lamp of the appliance fails ()

13 AUTHORIZED SERVICE

If Lighting is Not Functioning:

- Make sure that the plug is plugged in, and that the fuses are intact.
- Check the bulbs. Make sure you unplugged the device before performing this check. Tighten the bulbs if they are loose; you can replace the bulbs if they still don't work.

Possible Faults and Things that You can do Before Calling Technical Service:

A) If the device does not run in any way:

- Check to see if the hood is plugged in or if the plug is fit properly into the socket.
- Check the fuse, to which the appliance is connected, as well as the main fuse of your house.

If the device performance is not enough and it creates high noise while running:

- Is the outlet diameter of the appliance's flue adequate? (min. 120 mm).
- Are the metal filters clean? Please check.
- If you use the hood without flue, make sure that the carbon filters are not older than 6 months.
- Be attentive to ventilate your kitchen adequately, in order to provide an airflow. If you are still not satisfied with the performance of the appliance, consult the authorized technical service.

Troubleshooting

Fault description	Cause	Remedy
Product Does Not Work	Check the power connection.	Mains voltage must be 220-240 V, and product must be plugged into a grounded socket.
Illumination lamp does not operate	Check the power connection.	Mains voltage must be 220-240 V, and product must be plugged into a grounded socket.
Illumination lamp does not operate	Check the lamp switch.	Lamp switch must be at "on" position.
Illumination lamp does not operate	Check the bulbs.	Bulbs must be operative.
Product's Air Intake is Weak	Check The Aluminium Filter.	The aluminium cartridge filter should be washed once a month under normal conditions.
Product's Air Intake is Weak	Check The Air Outlet Flue.	Air Outlet Flue Must Be Open.
Product's Air Intake is Weak	Check The Carbon Filter.	In products that work with carbon filters, carbon filter must be replaced once in every 3 months under normal conditions.

Fault description	Cause	Remedy
It Does Not Discharge Air (in flueless use)	Check The Aluminium Filter.	The aluminium cartridge filter should be washed once a month under normal conditions.
It Does Not Discharge Air (in flueless use)	Check The Carbon Filter.	In products that work with carbon filters, carbon filter must be replaced once in every 3 months under normal conditions.

14 TECHNICAL TABLE

Supply Voltage	220 - 240 V 50Hz
Insulation Class of Motor	F
Insulation Class	CLASS I



This product complies with the 2014/30/EC (Regulation on Electro-magnetic Compliance) and 2014/35/EC (Regulation on Low Voltage Devices (LVD)) Directives.



This device complies with the Directive on the Control of Waste Electrical and Electronic Equipment.

Specifications of the device and this manual may be modified without prior notification.